

Your health can unlock new answers about Long COVID

Continue into the next phase of RECOVER to help improve research and care for American Indian and Alaska Native communities affected by Long COVID.

Long COVID affects about 1 in 20 people who are American Indian or Alaska Native. Long COVID can make it hard to go to work, go to school, or take care of daily needs. It's a condition that needs more attention and care.

Together, we learned about the Long COVID symptoms that American Indian and Alaska Native people may experience and what affects their risk of developing Long COVID.

By staying in the study, you could help lead to new discoveries about Long COVID. You will also be paid for your time.



Scan the QR code to learn about staying in the RECOVER study



RECOVER

Researching COVID to Enhance Recovery

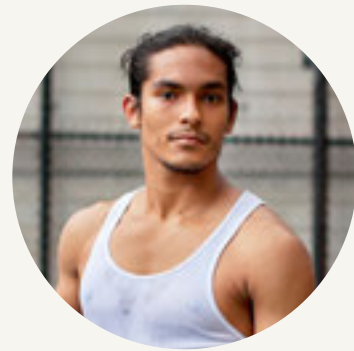
An Initiative Funded by the National Institutes of Health

Your experiences help us understand Long COVID in American Indian and Alaska Native communities

We need people from American Indian and Alaska Native communities so we can fully understand Long COVID. Your experiences guide doctors and researchers toward better care for you, your loved ones, and your community.

By continuing in the study, you can help make new discoveries about:

- How Long COVID affects the brain (thinking and memory), heart, and lungs
- How it may impact other long-term health problems, like:
 - Myalgic encephalomyelitis/chronic fatigue syndrome (ME/CFS) – extreme tiredness and brain fog after doing everyday activities
 - Autonomic dysfunction – when automatic bodily functions, like heartbeat or digestion, don't work properly
- What makes symptoms get better, stay the same, or get worse
- Whether Long COVID can increase the risk of other chronic illnesses, such as dementia, heart disease, diabetes, autoimmune disease, or cancer



Learn more about the next phase of the RECOVER adult study at recoverCOVID.info/adult-nextphase